

L14

Central telescopic mechanism in aluminium, manual extending top

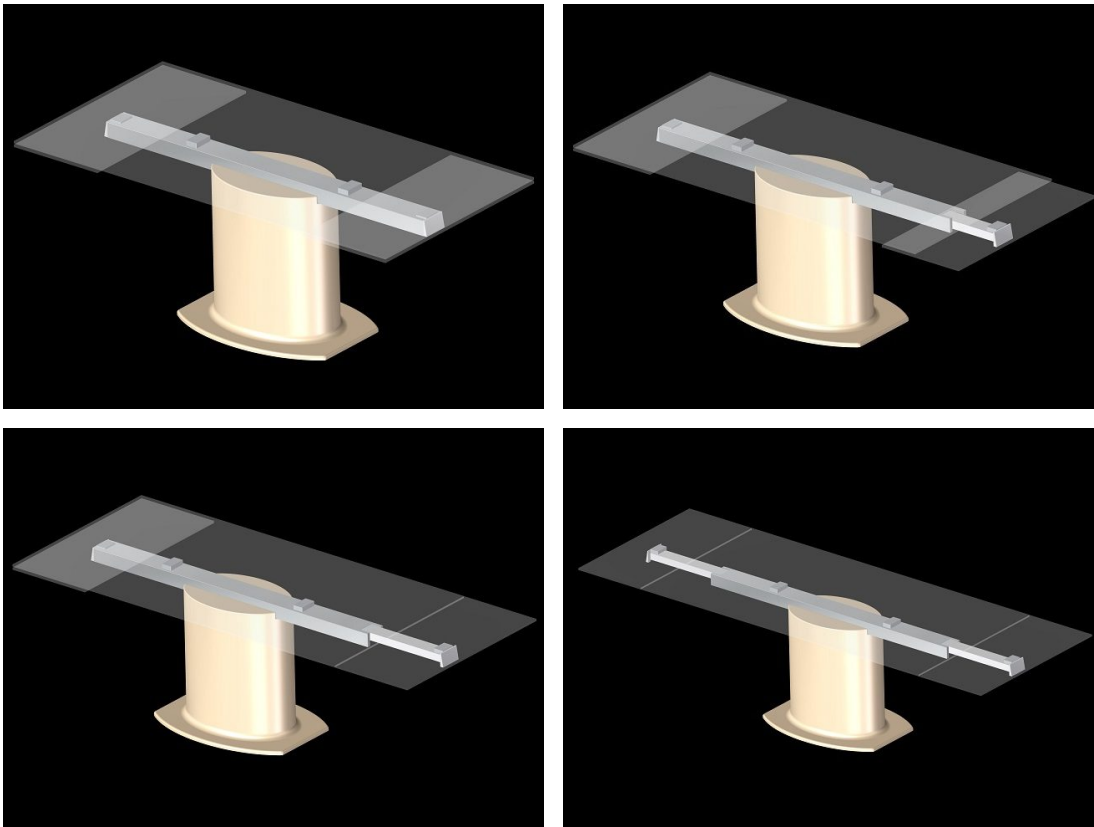
Telescopic mechanism that moves on polymer shaft bearings located inside the profile. The system works by removing the extensions at the front; at their full extent they are lifted manually and locked into position flush with the surface, with a safety system that prevents accidental closure.

The two extensions are individually removable.

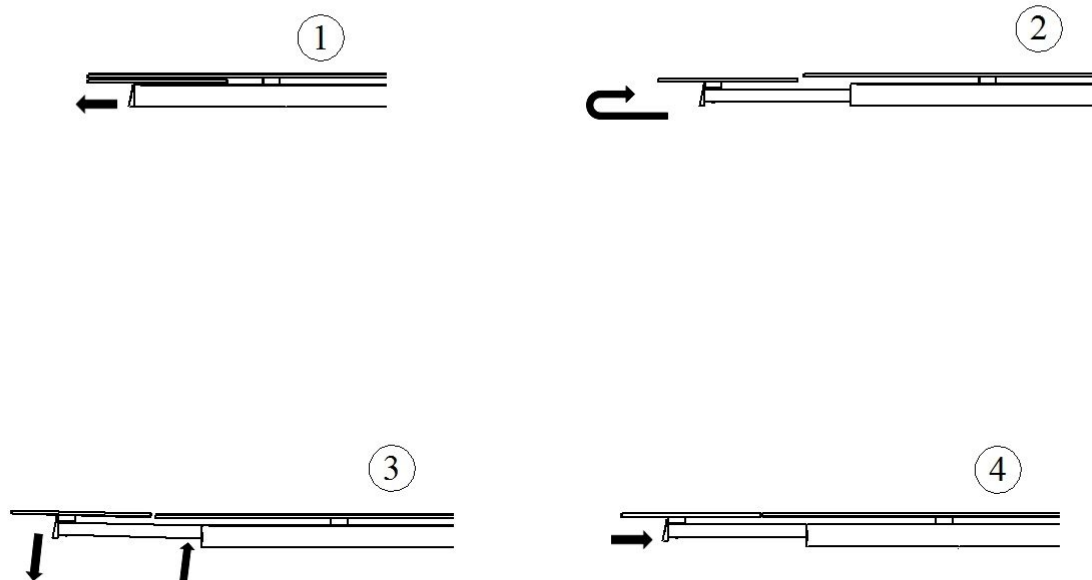
The system is fitted with a moulded "cover" for aesthetic purposes that can be of aluminium, stainless steel or other materials.

A mechanism that is particularly suitable for use with a central column, because it is robust enough to allow extension without twisting. It can also be used with tripod or similar legs.

A mechanism is available on request complete with legs and customisations.



Opening:



Finishings:



Standard Sizes:

Dimensions (table closed/open)

1000×1800/2300/2800

1000×2000/2500/3000